

# IAC Sound insulating curtain

IAC Sound insulating curtain is both sound-absorbing and sound-damping. The sound-absorbing curtain (approx. 3500 g/m<sup>2</sup>) has been developed to regulate room acoustics by providing varying amounts of sound-absorbing surface. An unfolded curtain provides high sound attenuation, while a folded curtain creates more sound in the room. Sound insulating curtains are used e.g. in music halls, assembly halls, conference rooms and concert halls.

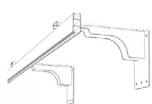
In addition to the sound-insulating curtain's unique sound-absorbing properties, it is also sound-insulating between rooms. It can be used to divide a room, screen off a disturbing sound source or supplement a door that is acoustically inferior. The sound curtain reduces the sound by approximately 12 dB, which gives a perceived halving of the sound level.



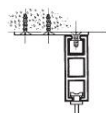
## Installation

The sound curtain is installed in a rail system on the wall or in the ceiling.

## Mounting Options



Wall



Ceiling

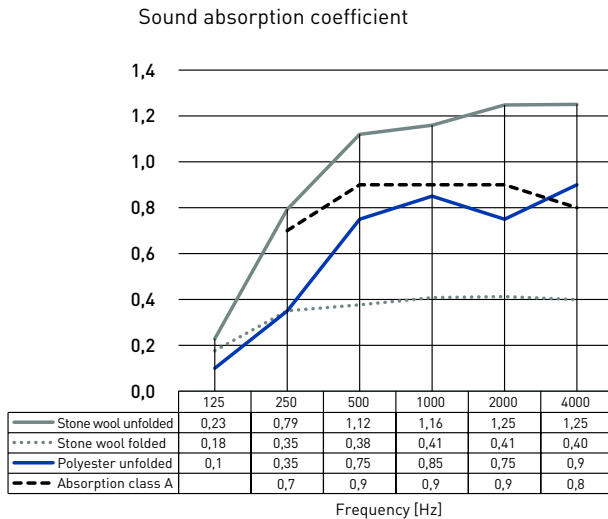


Suspended



Support rod  
A/E edge

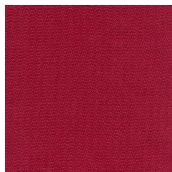
## Absorption



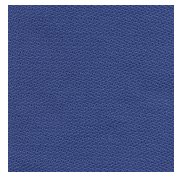
Values in the diagram show sound absorption area per object measured according to the space method. Sound curtain 2.4x1.4 m was installed flat suspended for absorption measurement, 150 mm. from the wall. The diagram also shows the sound-absorbing area of the curtain, folded.

## Material

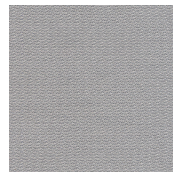
- ◇ Stone wool core or high density polyester core
- ◇ Collection Esmeralda: Trevira fabric



Wine red



Blue



Grey



Beige



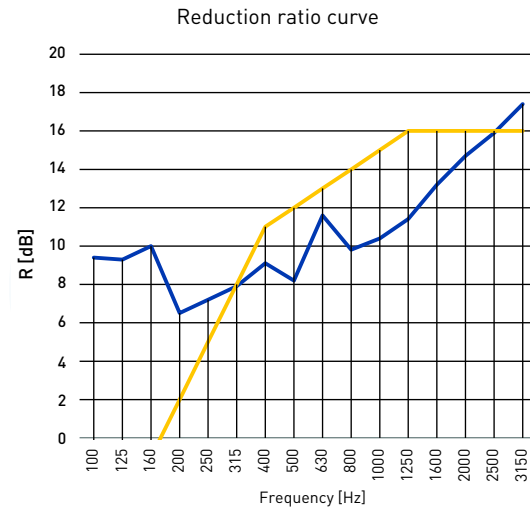
Black

- ◇ Collection Ivar: Organic cotton mixed with linen (discontinued)



Green

## Reduction



The sound insulation performance of the sound curtain is measured as a reduction figure,  $R_w=12$  dB. The reduction ratio curve shows the soundproofing benefit for the respective frequency band (Hz).

## Environment & durability

- ◇ Easy to move and reassemble if needed
- ◇ Spare parts are always in stock
- ◇ Reusable core via Rewool
- ◇ Sunda Hus, rating B
- ◇ The Trevira fabric and the polyester core are approved according to Oeko Tex® Standard 100

## Fire resistance

- ◇ Stone wool core: A1 (Euro class)
- ◇ Polyester core: B-s1,d0 (Euro class)
- ◇ Surface layer Esmeralda: B1 (DIN 4102)

## Emissions

- ◇ Core emissions in indoor climate: M1

## Order

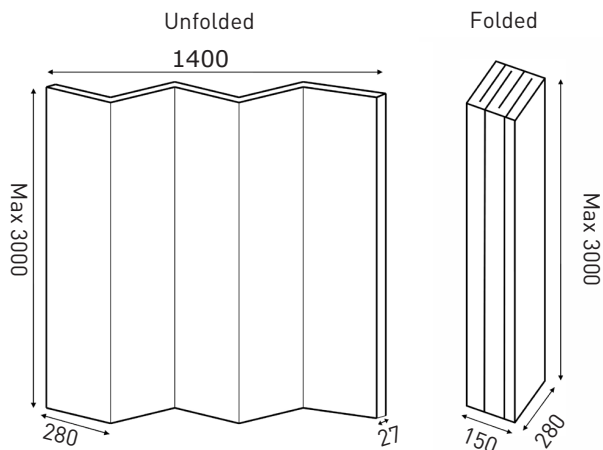
IAC Sound insulating curtain, combined with installation height, color, core and mounting method

## Cleaning

- ◇ Possible to vacuum with a soft nozzle, brush with a dry, soft brush and wipe with a well-wrung cloth or sponge.

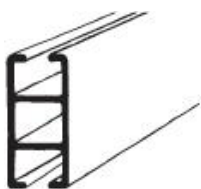
## Format

- ◇ 1400 x is specific height x 27 mm (max height 3000 mm)

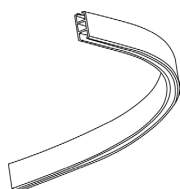


(mm)

## Rails, fittings and accessories



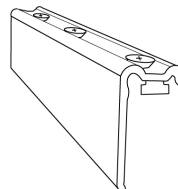
**Curtain rail**  
Available as 1.5 m and 3 m



**Rail bending**



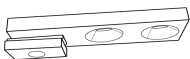
**S Rail**  
Enables mounting close to the wall



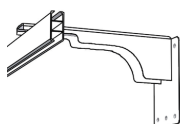
**Rail assembly**  
Connects multiple rails



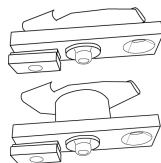
**End protection**  
Single protection for drapery rail



**Ceiling fittings**  
1 bracket per 60 cm



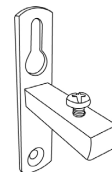
**Wall bracket**  
1 bracket per 60 cm



**Bearing mount**  
Available for A & E edge



**Ceiling pendant**  
Lowers the drapery rail 30, 60 or 100 cm



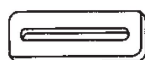
**Niche bracket**  
To attach the rail end against wall



**Pull rod/wand**  
To move the curtain in the rail



**Twist stop**  
Blocks unwanted movement of the drapery



**Ceiling bracket**  
Gives the ceiling bracket 6 mm distance, e.g. in existing installations